

GROVE

DRUCKLUFTANLAGE MIT LENKUNG VOM OBERWAGEN
 COMPR. AIR SYSTEM WITH STEERING FROM SUPERSTRUCTURE

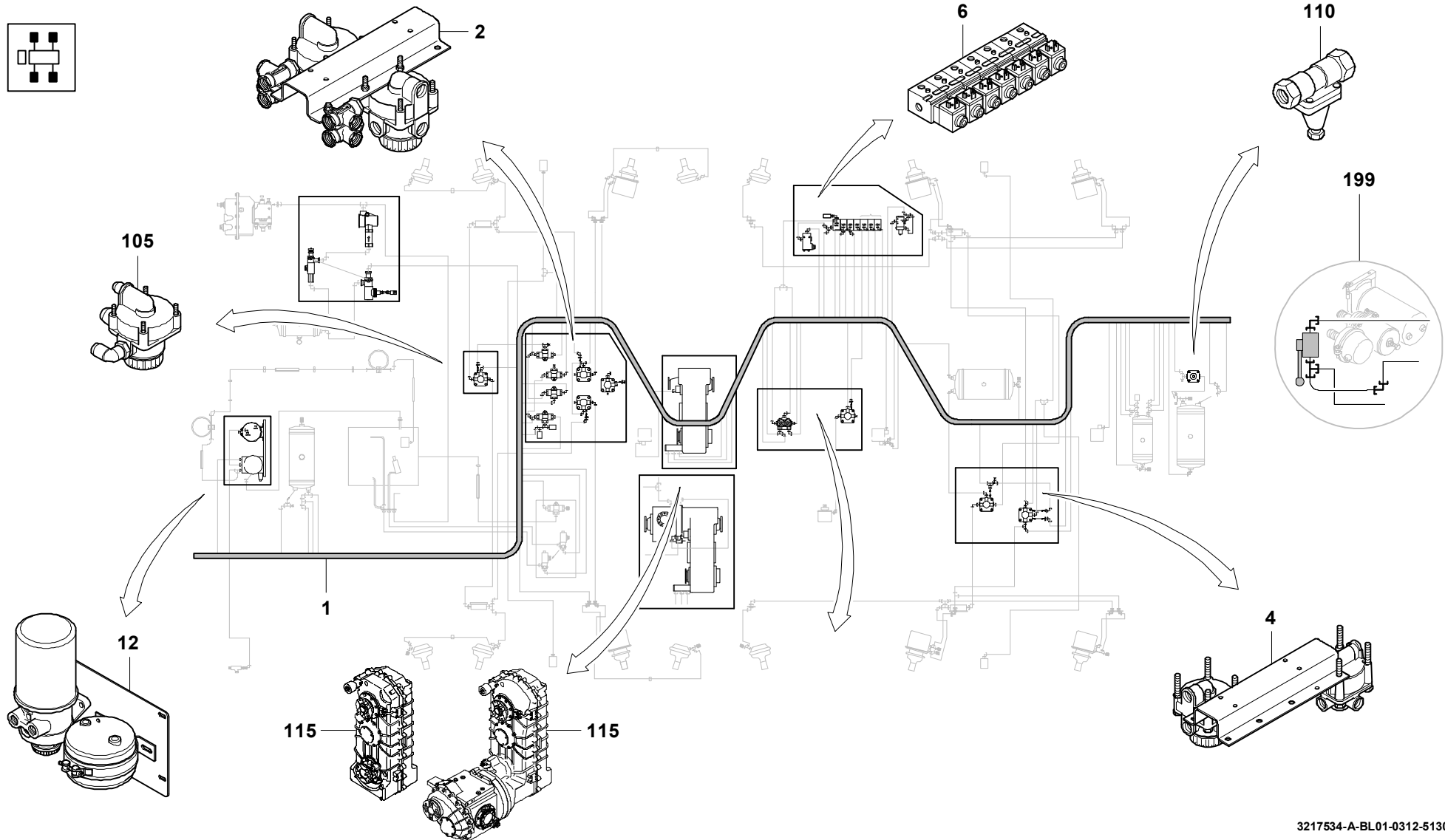
BILDTAFEL
 PICTORIAL DISPLAY

GMK 5130
BE 505
G 751

03.12

3217534-ETL A

1/6



GROVE

DRUCKLUFTANLAGE MIT LENKUNG VOM OBERWAGEN
 COMPR. AIR SYSTEM WITH STEERING FROM SUPERSTRUCTURE

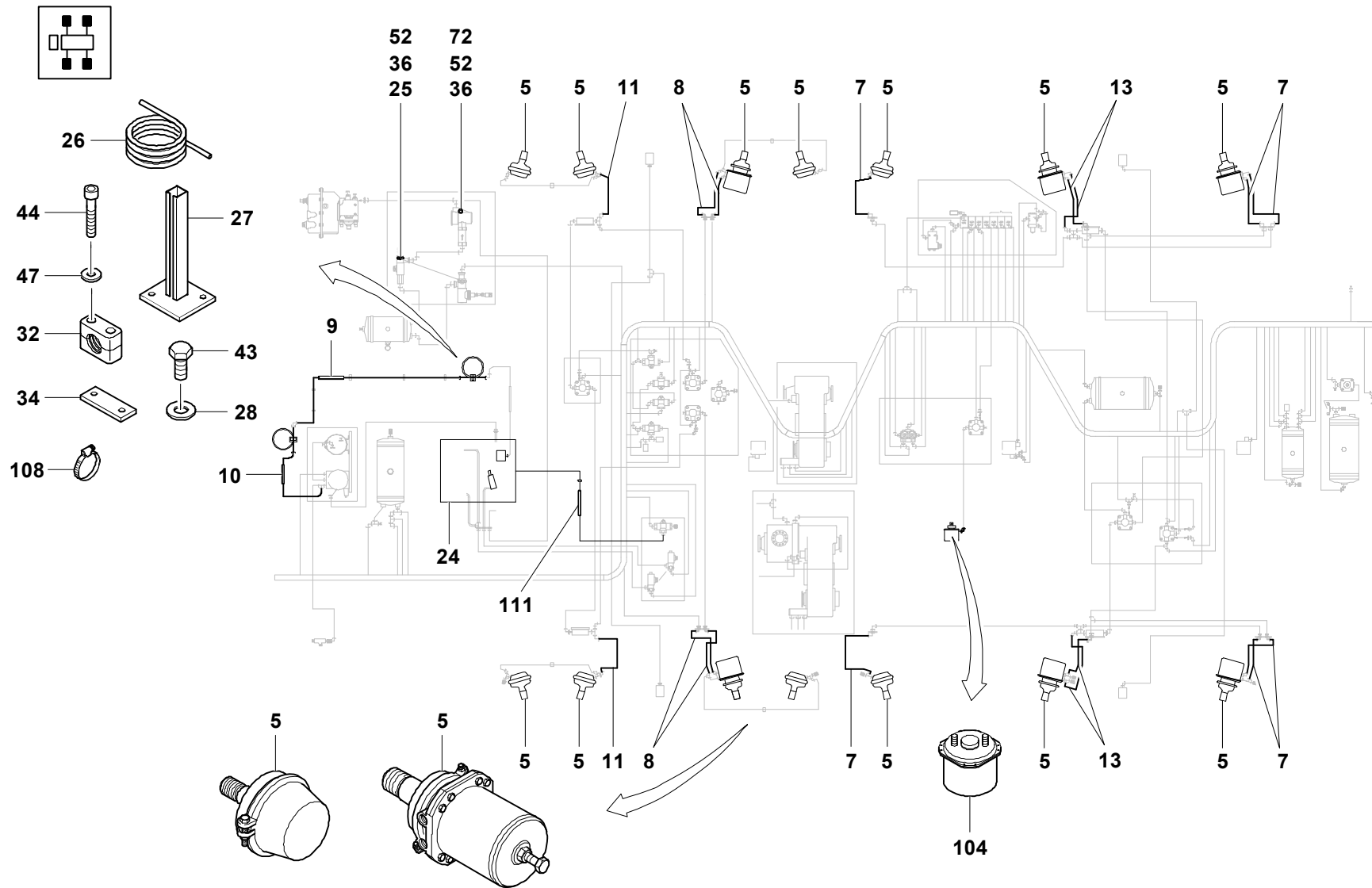
BILDTAFEL
 PICTORIAL DISPLAY

GMK 5130
BE 505
G 751

03.12

3217534-ETL A

2/6



GROVE

DRUCKLUFTANLAGE MIT LENKUNG VOM OBERWAGEN
 COMPR. AIR SYSTEM WITH STEERING FROM SUPERSTRUCTURE

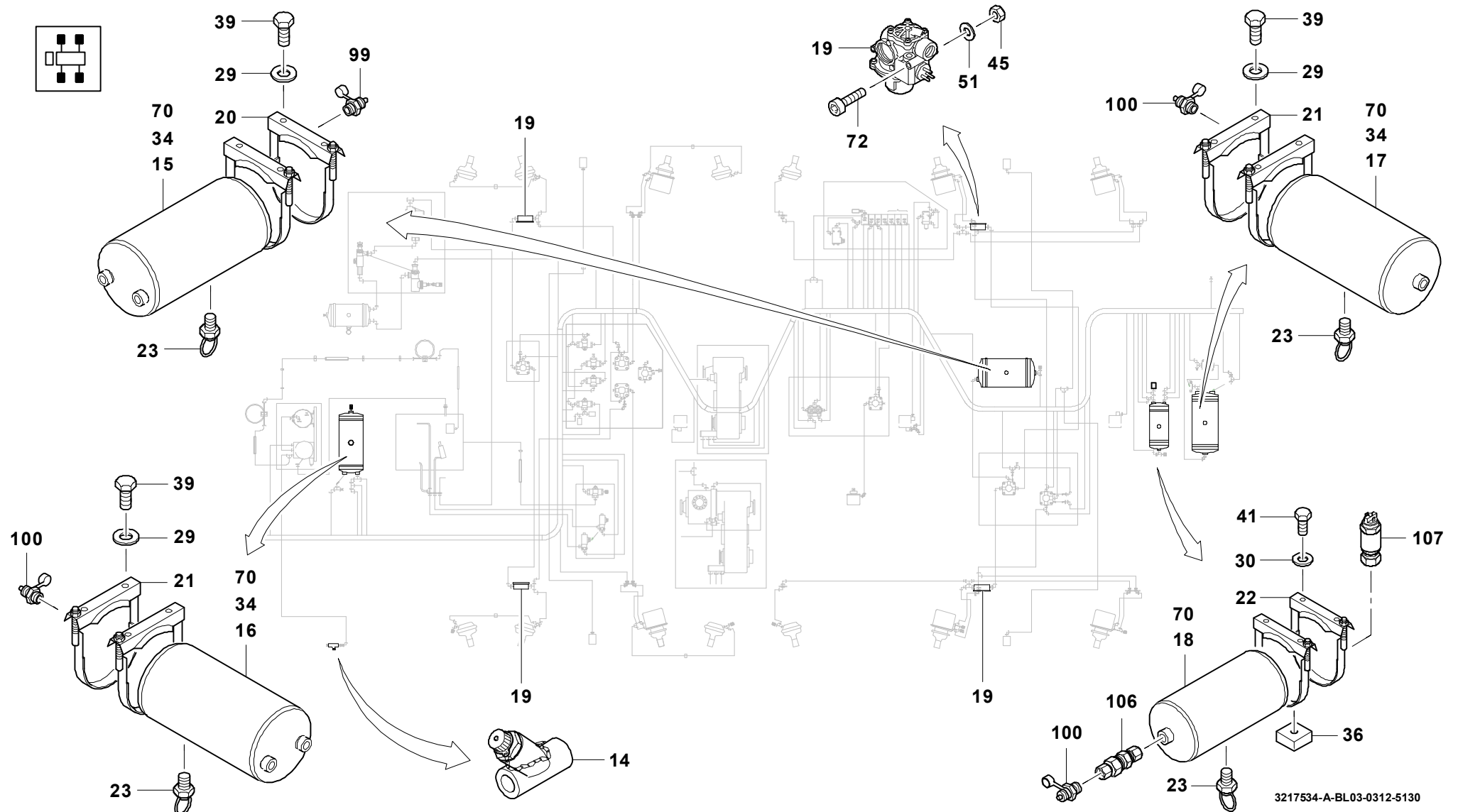
BILDTAFEL
 PICTORIAL DISPLAY

GMK 5130
 BE 505
 G 751

03.12

3217534-ETL A

3/6



3217534-A-BL03-0312-5130

GROVE

DRUCKLUFTANLAGE MIT LENKUNG VOM OBERWAGEN
 COMPR. AIR SYSTEM WITH STEERING FROM SUPERSTRUCTURE

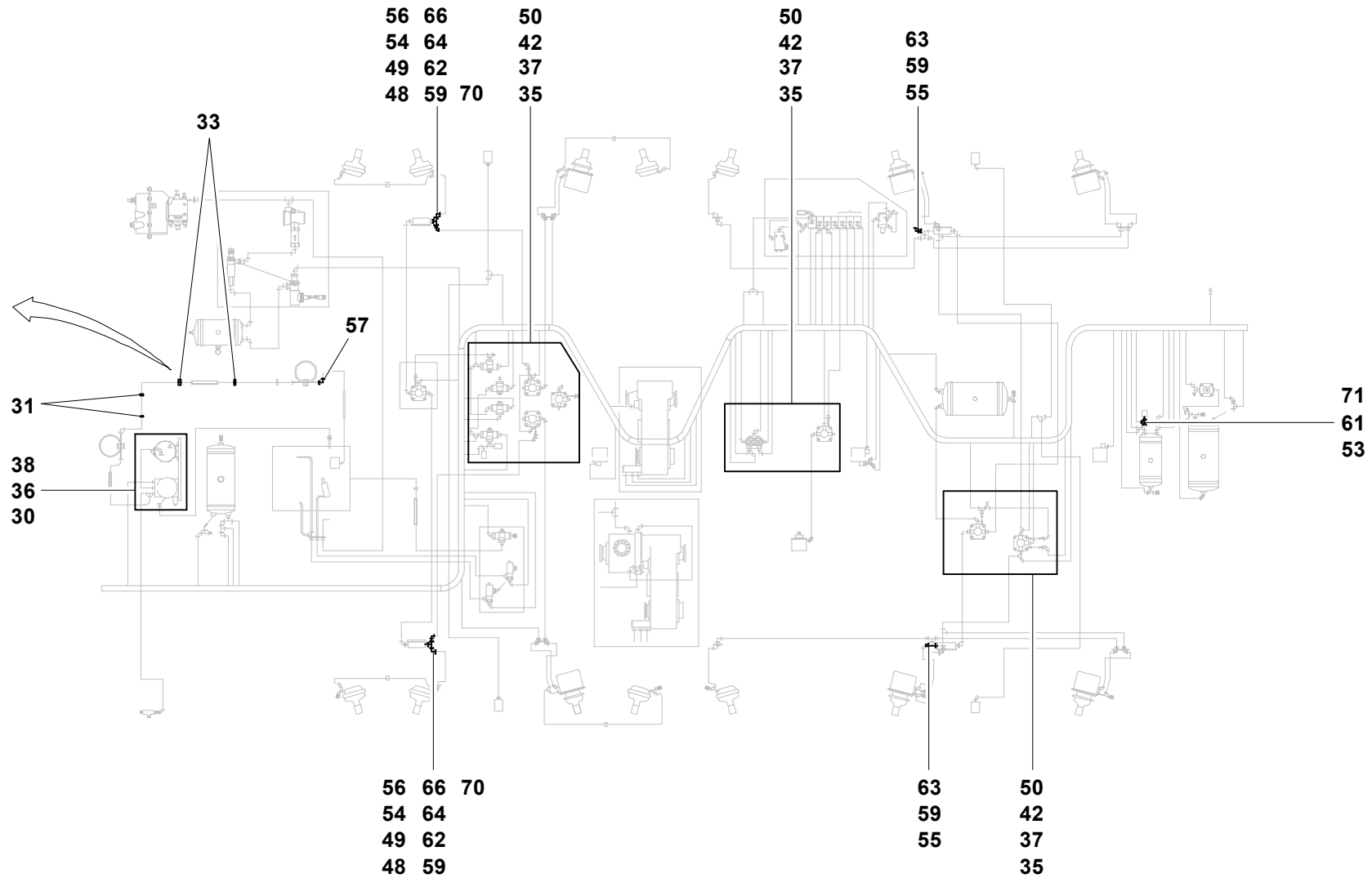
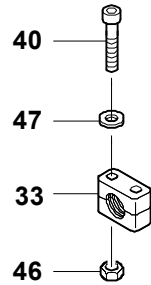
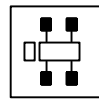
BILDТАFЕL
 PICTORIAL DISPLAY

GMK 5130
BE 505
G 751

03.12

3217534-ETL A

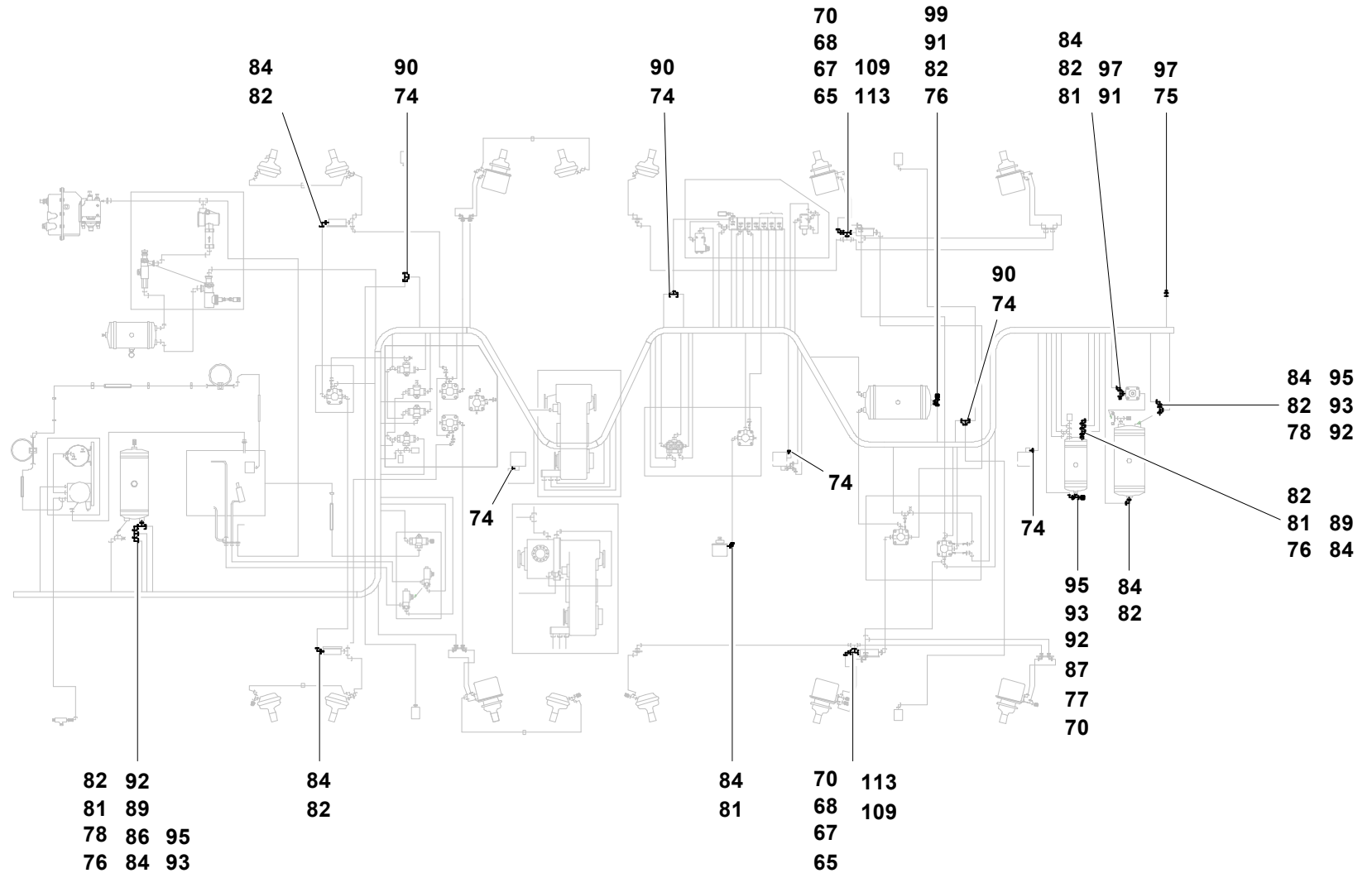
4/6





DRUCKLUFTANLAGE MIT LENKUNG VOM OBERWAGEN
 COMPR. AIR SYSTEM WITH STEERING FROM SUPERSTRUCTURE

| | | | | |
|-------|--|--------------------------------|--|-----------------------------|
| 03.12 | | BILDTAFEL PICTORIAL DISPLAY | | GMK 5130 BE 505 G 751 |
| | | 3217534-ETL A | | |





DRUCKLUFTANLAGE MIT LENKUNG VOM OBERWAGEN
 COMPR. AIR SYSTEM WITH STEERING FROM SUPERSTRUCTURE

| | | | |
|-------|--|--------------------------------|-----|
| 03.12 | | BILDTAFEL PICTORIAL DISPLAY | |
| | | 3217534-ETL A | 6/6 |

GMK 5130
BE 505
G 751

